



# Triple Hybrid 4K Video Docking Station with PD Charging

**User Manual**  
JU-DK0P11-S1



Manual



04-1360C



## Table of Contents

• Features	3
• Package contents	4
• System requirements	4
• What is USB 3.1 Type-C?	5
• DP Alt Mode (DisplayPort alternative mode)	6
• USB Power Delivery	6
• Front View	7
• Side View	8
• Rear View	9
• DisplayLink Manager installation	10
• Allow “DisplayLink” app on Mac	12
• Supported Display resolution	14
• Q & A	15
• Support	16

## Features

- Support USB 10G speed connection between host and docking station. (USB 10G host required)
- Support USB 10G speed port x2, Type-A + Type-C
- Support USB 5G speed port x3, Type-A x2 + Type-C
- Support three video output simultaneously, one DP Alt Mode + two DisplayLink.
- DisplayLink output support HDMI or DP output.
- Alt mode video output resolution up to 4K 3840x2160p@60Hz
- Alt mode video output support display's EDID
- DisplayLink video output resolution up to 4K 3840x2160p@60Hz
- DisplayLink video output support PCM 2.0 ch and 5.1ch audio
- Support Ethernet 10/100/1000Mbps
- Support 3.5mm Headset jack
- Support USB PD 3.0 charging 100W
- Support Kensington Security Slot

## Package contents

- Triple Hybrid 4K Video Docking Station
- Power adapter DC 24V / 5.41A
- USB Type-C to Type-C cable 100W (20V/5A with USB Type-C to Type-A Adapter (Type-A host not support DP Alt Mode, USB 10G & PD charging)
- User Manual

## System requirements

- Host computer system with an available USB Type-C (Thunderbolt 3/4 compatible) Port which supports DP Alt Mode and Power Delivery
- Windows® 11 / 10 / 8 .1/ 8 / 7 (32/64 bit)
- Mac OS X® 10.14, to 15.X, 26.x

Operating system requirements are subject to change. For the latest requirements, please visit [www.siig.com](http://www.siig.com) and search JU-DK0P11-S1

## What is USB 3.1 Type-C?

- USB 3.1 Type-C is a new generation connector interface of USB 3.1 standard, that is capable to support for the following:
- USB 3.1 Gen 1 support up to 5 Gbps data transfer rate and USB 3.1 Gen 2 support up to 10Gbps data transfer rate
- Bi-directional power delivery up to 100W, if both the USB host connection and the device support it
- DP Alternate modes, the signal is based on the DisplayPort version to deliver different speeds.

Not all USB-C ports support the full functionality of the USB Type-C standard. For more information, please refer to the information provided by the manufacturers.

## **DP Alt Mode** (DisplayPort alternative mode)

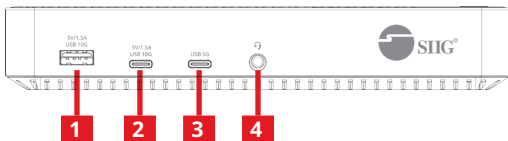
This docking station supports DP Alt Mode, which means a DisplayPort video signal can be transferred over a USB-C cable.

Because the docking station supports DP Alt Mode, so the Alt Mode video port can output the video directly via DP Alt Mode without other driver installs.

## **USB Power Delivery**

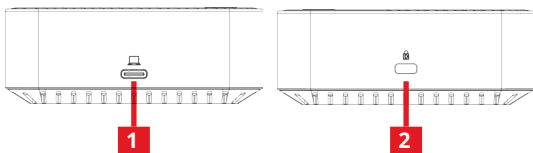
This docking station supports USB Power Delivery, which means it delivers up to 100 watts of power to your connected host laptop (your laptop's USB-C port must support power delivery). USB Power Delivery is a specification that allows power to be sent over a USB-C or Thunderbolt 3/4 cable that supports the specification. Ensure your USB-C cable can support PD 100W transfer or use the included USB-C cable.

## Front View



- 1. USB 10G Type-A port:**  
Support USB UASP mode, 10Gbps speed and 5V/1.5A power output.  
connect for USB peripherals
- 2. USB 10G Type-C port:**  
Support USB UASP mode, 10Gbps speed and 5V/1.5A power output.  
connect for USB peripherals
- 3. USB 5G Type-C port:**  
Support USB UASP mode, 5Gbps speed and 5V/1.5A power output.  
connect for USB peripherals
- 4. 3.5mm headset jack:**  
connect to headset  
(include audio and microphone)

## Side View



### 1. **USB-C host:**

Connect to USB-C port which supports DP Alt Mode and Power Delivery.

PD charging 100W

(Please use include USB C to C cable)

Not all USB-C ports support the full functionality of the USB Type-C standard.

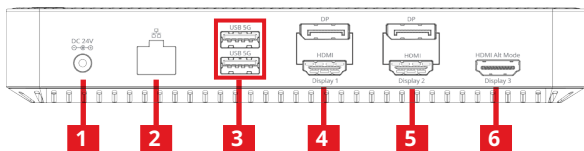
Ensure that your host USB-C port supports all functions

### 2. **Kensington Security Slot:**

Connect a K-Slot Style Locking Device to the Lock Slot.

Note: Follow the manufacturer's instructions when installing your Locking Device.

## Rear View



### 1. **Power jack:**

Connect the Power Adapter to the DC Power Input Port on the Docking Station. DC 24V/5.41A

### 2. **RJ-45 Gigabit Ethernet port**

Connect to ethernet router or switch (Support 1000/100/10 Mbps)

### 3. **USB 5G ports:**

USB 3.0 Type-A port support USB UASP mode, 5Gbps speed and 5V/900mA power output.

Connect for USB peripherals

### 4. **DisplayLink video output 1**

This video output via DisplayLink chip  
Select DP or HDMI connect to display, they can't output simultaneously.

Resolution up to 3840x2160p@60Hz

## 5. **DisplayLink video output 2**

This video output via DisplayLink chip  
Select DP or HDMI connect to display,  
they can't output simultaneously.

Resolution up to 3840x2160p@60Hz

## 6. **Alt Mode video output**

This video output via host DP Alt Mode  
Connec to HDMI display,

Resolution up to 3840x2160p@60Hz

## **DisplayLink Manager installation**

- “DisplayLink Manager” software is required
- Without DisplayLink Manager install,  
DisplayLink video output 1 & 2 can not  
output video.
- Please download the “DisplayLink Manager”  
from SIIG website or DisplayLink website

1. Follow the screen instructions to complete the installation and restart your PC/Laptop

(For Mac OS® 10.13.3 and the above, the system would display a “System Extension Blocked” warning while driver installing. Please allow “DisplayLink Corp” at Security & Privacy setting. )

2. For DisplayLink configuration, please search & refer to Support document on DisplayLink website  
<https://support.displaylink.com/>

## **Windows**

How to configure DisplayLink displays on Windows

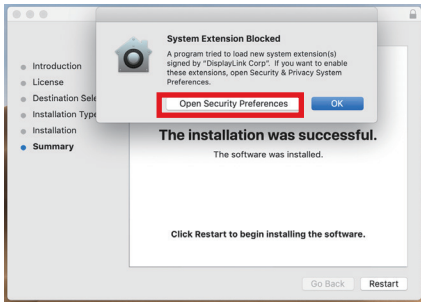
## **MAC**

How to configure DisplayLink displays on Mac OS X

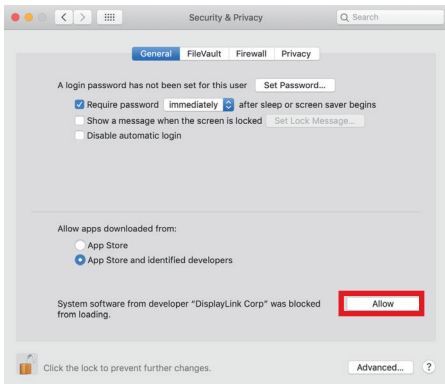
DisplayLink Manager App for macOS  
Introduction, Installation & Scope

# Allow “DisplayLink” app on Mac

Open Security Preference while driver installing

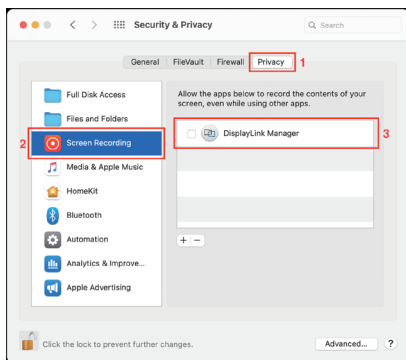


Allow “DisplayLink Corp” app

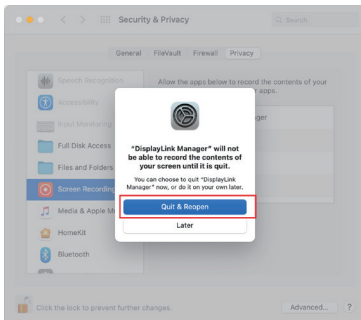


## Enable “Screen Recording”

macOS Catalina 10.15 requires the user to permit "Screen Recording" in order for DisplayLink devices to work properly.



- Because the new permission will only be active the next time you start the application, macOS will invite you to “Quit & Reopen”. In Catalina 10.15.x please select “Quit Now”. Please accept.



## Supported Display resolution

Display Output	Alt mode Output A	DisplayLink Output 1 B	DisplayLink Output 2 C
Only A	4K@60	N/A	N/A
Only B	N/A	4K@60	N/A
Only C	N/A	N/A	4K@60
A + B	4K@60	4K@60	N/A
A + C	4K@60	N/A	4K@60
B + C	N/A	4K@60	4K@60
A + B + C	4K@60	4K@60	4K@60

## Q & A

- **Why my laptop can't get 100W charging?**

It depends on laptop charging spec, not all laptops need 100W input.

- **Why Alt Mode output has no video?**

Ensure your USB-C host port support DP Alt Mode.

Every output has DP or HDMI output, but can only select one output at once.

- **Why DisplayLink output has no video?**

Ensure the DisplayLink software have installed. Every output has DP or HDMI output, but can only select one output at once.

- **Why play video on DisplayLink output will have latency or cause CPU heavy loading ?**

DisplayLink outputs are kind of USB video extend via DisplayLink chip which needs extra CPU computing. So DisplayLink output will not fit to play video.

Recommend play video on Alt Mode output.



Thank you for your purchase!

**<https://www.siig.com>**



Please visit **SIIG Support**



Please visit **Product page**